

Akzidentien

Denselben Ton im Violin- und Bass-Schlüssel schreiben

Diagram showing the same pitch classes written in both treble and bass clefs:

- f (treble clef, first line)
- g' (bass clef, second line)
- e' (treble clef, first space)
- as (bass clef, second space)

Noten lesen, benennen

Diagram showing notes written in both treble and bass clefs:

- C (bass clef, first line)
- des (bass clef, first space)
- fis' (treble clef, first space)
- c''' (treble clef, second line)
- dis'' (treble clef, second space)
- as''' (bass clef, second space)
- A (bass clef, second space)
- h (bass clef, second space)

Noten schreiben (mit dem passenden Schlüssel)

(Wenn es 2 Möglichkeiten gibt, mit beiden Schlüsseln notieren)

Diagram showing notes written in both treble and bass clefs:

- B (bass clef, first space)
- Eis (bass clef, first space)
- d (bass clef, first space)
- cis' (treble clef, first space)
- cis' (treble clef, first space)
- fis'' (treble clef, second space)
- des''' (bass clef, second space)

Diagram showing notes written in both treble and bass clefs:

- D (bass clef, first space)
- g' (bass clef, second line)
- g' (treble clef, first space)
- e'' (treble clef, first space)
- his''' (treble clef, second line)
- a (bass clef, second space)
- a (treble clef, second space)
- ces (bass clef, second space)

Ganz- und Halbtonschritt

Intervalle schreiben

A musical staff in C major with a treble clef and a common time signature. The notes are: G4, A4, B4, C5, B4, A4, G4, F4, E4, D4. The intervals between these notes are labeled below the staff: k 2 aufw., g 2 aufw., g 2 abw., g 2 abw., k 2 aufw.

k 2 aufw. g 2 aufw. g 2 abw. g 2 abw. k 2 aufw.

Intervalle bestimmen

A musical staff in C major with a treble clef and a common time signature. The notes are: G4, A4, B4, C5, B4, A4, G4, F4, E4, D4. The intervals between these notes are labeled below the staff: g 2, g 2, k 2, g 2, k 2, g 2.

g 2 g 2 k 2 g 2 k 2 g 2

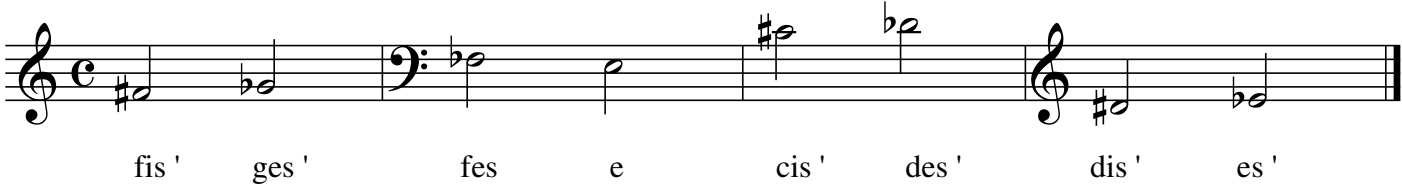
"musikalische Reise"

A musical staff in C major with a treble clef and a common time signature. The notes are: G4, A4, B4, C5, B4, A4, G4, F4, E4, D4. The intervals between these notes are labeled below the staff with arrows indicating direction: g 2 ↓, g 2 ↓, g 2 ↓, g 2 ↓, k 2 ↓, g 2 ↑, g 2 ↑, k 2 ↑, k 2 ↑.

g 2 ↓ g 2 ↓ g 2 ↓ g 2 ↓ k 2 ↓ g 2 ↑ g 2 ↑ k 2 ↑ k 2 ↑

Lösung

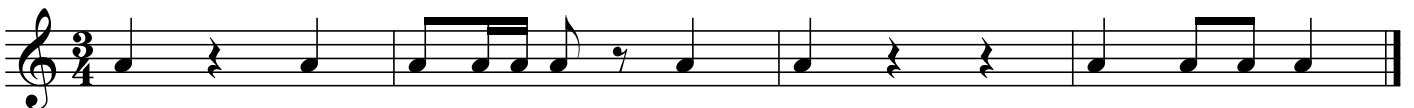
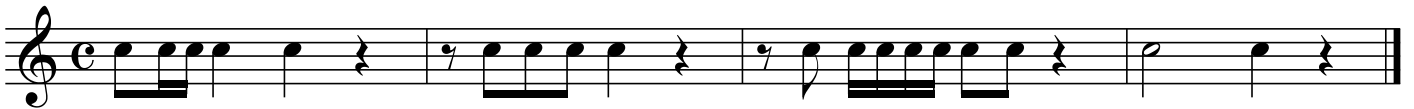
enharmonische Umdeutung



The image shows a musical staff with a treble clef, a common time signature (C), and a key signature of one sharp (F#). The staff contains eight notes: F#4, G4, F#4, E4, C#5, D#5, D#5, and E5. The notes are grouped into four pairs, each with a label below it: 'fis'' (F#4), 'ges'' (G4), 'fes' (F#4), 'e' (E4), 'cis'' (C#5), 'des'' (D#5), 'dis'' (D#5), and 'es'' (E5). The notes are written on a single staff, with the first two notes in the treble clef and the last two notes in the bass clef. The notes are connected by a single line, indicating they are part of the same melodic line.

Noten- und Pausenwerte und Taktarten

fehlende Pausen ergänzen



fehlende Notenwerte ergänzen (1 Note pro Takt)

